



Completed Projects

Mission Valley Branch Library



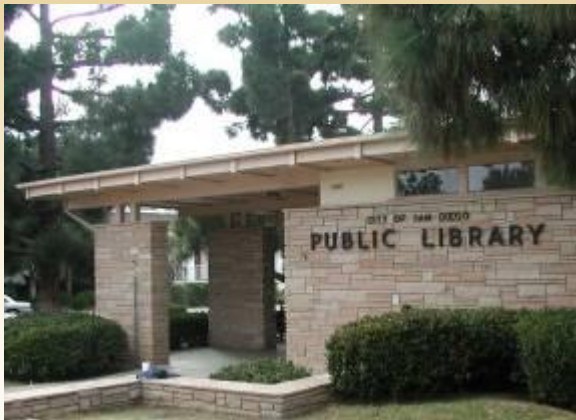
- Opened 2002
- Total Cost:
\$5,520,000
- 19,760 s.f.





Completed Projects

Point Loma/Hervey Branch Library



- Old facility—
4,894 s.f.



- Opened 2003
- Total Cost:
\$5,250,000
- 24,745 s.f.





Completed Projects

La Jolla/Riford Branch Library



- Old facility—
10,000 s.f.



- Opened 2004
- Total Cost:
\$7,000,000
- 26,000 s.f.





Completed Projects

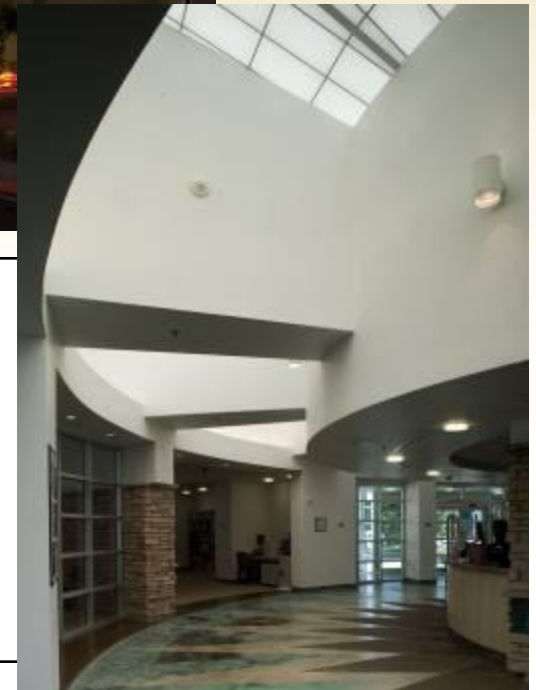
College Heights-Rolando Branch Library



- Old facility—
4,430 s.f.



- Opened 2005
- Total Cost:
\$8,741,000
- 15,000 s.f.





Completed Projects

Otay Mesa-Nestor Branch Library



- Old facility—
10,000 s.f.



- Opened 2006
- Total Cost:
\$5,038,000
- 15,000 s.f.





Completed Projects

Serra Mesa-Kearny Mesa Branch Library



- Old facility—
4,860 s.f.



- Opened 2006
- Total Cost:
\$8,846,000
- 15,000 s.f.





Completed Projects

North University Community Branch Library



New Facility

- Opened 2007
- Total Cost:
\$7,899,000
- 15,000 S.F.

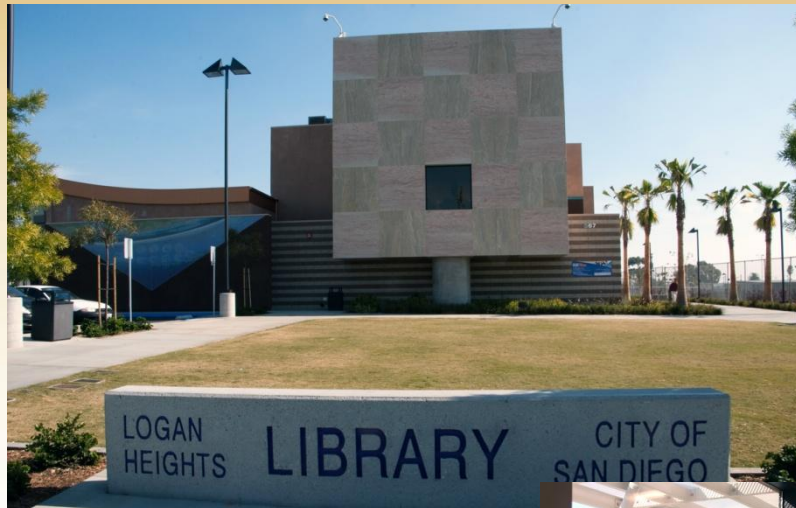


Completed Projects

Logan Heights Branch Library



Old facility—
3,967 s.f.



- Opened 2009
- Total Cost:
\$14,592,000
- 25,000 s.f.



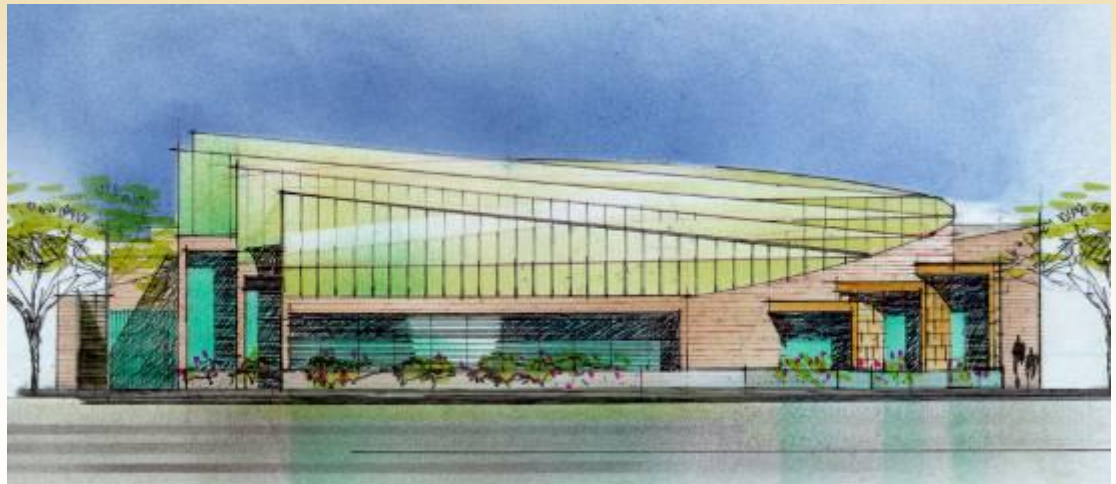
Ongoing Projects

Skyline Hills Branch Library



Existing facility—

- 4,100 s.f., opened 1969
- No children's area
- 8 computers



- New 19,400 square foot Library will include 66 public computers, children's area and 4,100 s.f. of meeting space.



Ongoing Projects

Mission Hills Library

